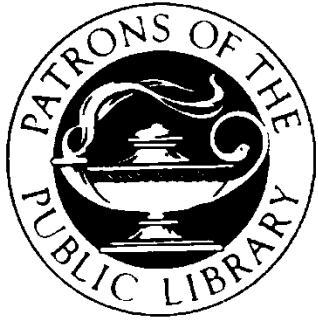


POPL:
Patrons of the Public Library



**East Baton Rouge
Parish Library**



POPL Background

- Friends of Library organization for the East Baton Rouge Parish Library since 1984
- In a time of huge budget cuts and fiscal uncertainty, POPL founders originally marshaled forces and organized to help Library secure its own funding via the 10-year, dedicated property tax
- Name was chosen to avoid confusion with The Friends of the LSU Library, which enjoys a huge presence in the community

What is POPL

- It's not just Volunteers
- It's not just Friends
 - *though a number of friends are volunteers, and a number of volunteers are friends*
 - *it's not about the dues... and at \$5.00, you can see why*
- It's not a Foundation



POPL Provides the Funds for “Lagniappe” to Enrich:



Library Programming



Library Services



Library Resources

POPL Supports Library Activities and Programming Throughout the Year

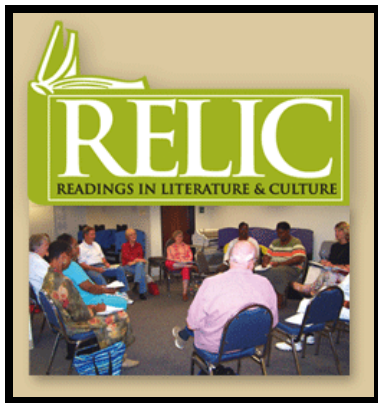


POPL also Serves as a Vehicle for:

- **Advocacy in Support of Library Issues**
- **Grants**
- **Donations, Gifts, & Memorials**
- **Fund-Raising**
- **Ten-Year, Dedicated Property Tax Campaign**



Grant Programs are Built on External Relationships



POPL Organization

Mission is to support the work of the East Baton Rouge Parish Library both financially and through volunteer efforts

- 1988 Constitution updated the original 1984 organization
- From seven to fifteen Board Members
- Board Nomination process is low-key
- Consistent with other Friends of Libraries groups throughout the USA
- POPL Membership totals 378



Internal Relationships

Working together:

- POPL
 - Board
 - Volunteers
 - Donors
- Library Administration
- Library Staff
- Library Board of Control



POPL Procedures

- Donation and Memorial process
- Occasional meetings
- Annual or Bi-annual letter ceased when postage began inflating cost of mail-outs; members all receive SOURCE
- Considering returning to yearly letter
- Considering a membership acknowledgment postcard

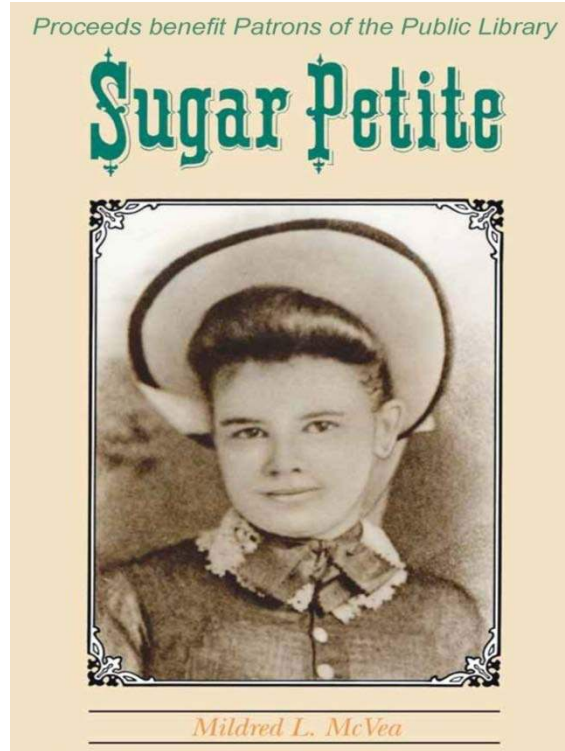


POPL Funding and Fiscal Controls

- Private, non-profit organization with 501 (c) 3 status on a low 990 filing tier
- Dues are consistent with other Library Friends groups
- CPA files annual tax return
- Look at Best Practices for small 501 (c) 3 organization
- Two signers are required for each check
- Consult with POPL Board for any non-routine expense
- POPL's credit union account approximates \$45,000
- Most of POPL's funding comes from gifts and proceeds from the monthly Gift Book Sale
- Also has a small endowment fund with BRAF



Fundraisers Feature Books & Authors



POPL Funds Support:

- Summer Reading Program Expenses
 - Programming
 - Prizes
 - Parties
- Author-Illustrator, now approaching its 34th year
 - Reception
 - Author expenses
 - Book sales
- One Book One Community and Big Read series
- Attic Treasures, now approaching its 11th year
 - refreshments
- Live at Chelsea's, now in its 4th year
- RELIC and Prime Time grant programs...
 - gift books for children
 - treats
 - refreshments



Support Authors & Summer Reading



*Programs!
Parties!
Prizes!*



Author Illustrator Series

- Annual program
- Now in its 34th year
- Nationally known authors and illustrators
- Workshop for teachers, librarians and writers or illustrators

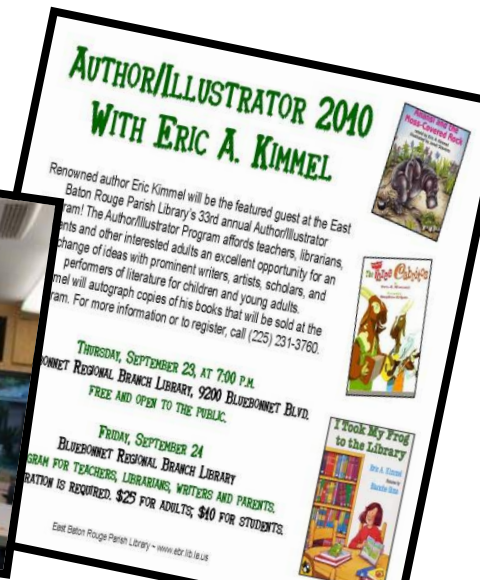
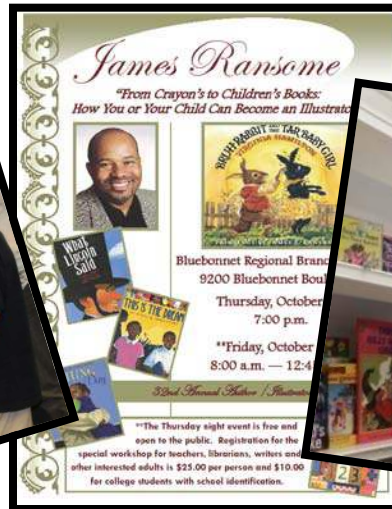
Author-
Illustrator
PROGRAM

featuring nationally noted authors,
illustrators, scholars, and
performers of literature
for children and young adults

Eric A. Kimmel

September 2010

East Baton Rouge Parish Library



The Big Read and One Book One Community



*Speakers
Receptions
Program Expenses*

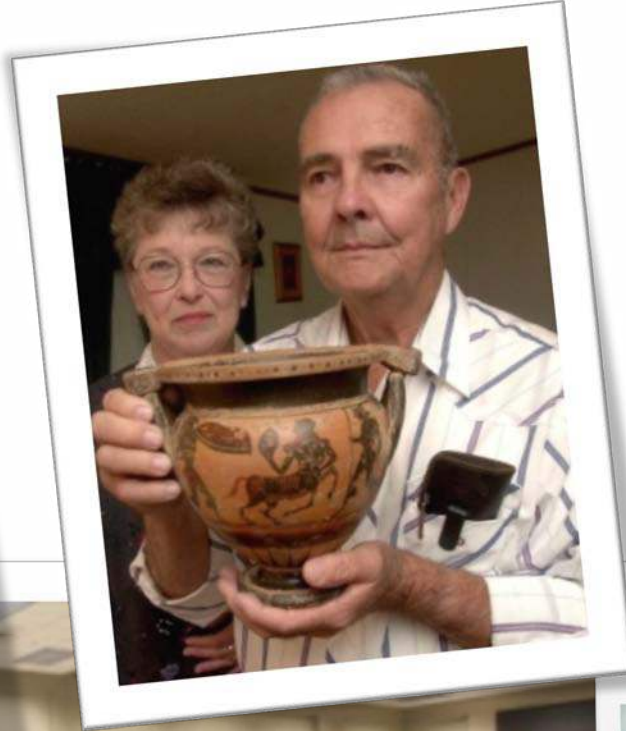
One Book
ONE COMMUNITY

Meet
Neil White
July 29 • 7p.m.

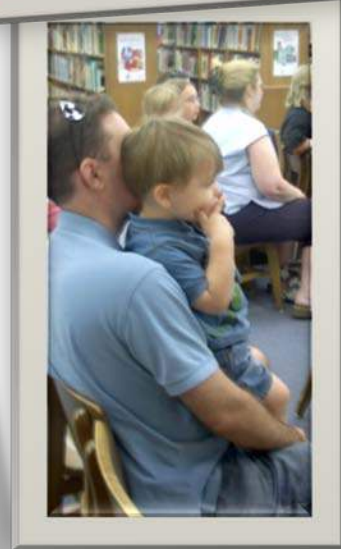
LSU Cox Communications
Academic Center for Student Athletes
www.ReadOneBook.org



Attic Treasures



Jazz and Blues Concerts, Informances, Programs



Support for Other Expenses

- Author receptions and events such as Literary Marketplace / Authors Row
- Outreach Events such as Earth Day, Literacy Day, Life After 50, etc
- Expenses for exhibits
- Expenses for special meetings of the LBOC
- Recruiting expenses
- ***Sugar Petite*** copyright and printing, which in turn generates revenue for POPL
- BRAC dues
- Occasional Staff Training Day



Library Volunteers Help:

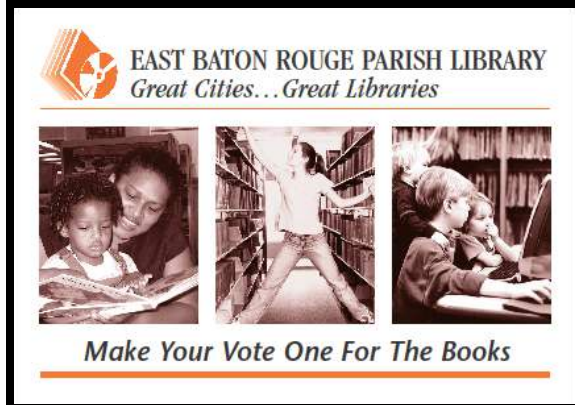


- Library Programs
- Library Card sign-up days and outreach events
- Library Fundraisers such as monthly Recycled Reads Book Sale, Book Fairs, and Gift Wrap/Information Tables
- Library Digitization projects

Tax Election Every 10 Years

Consult with:

- Attorney General's Office
- Office of the Legislative Auditor
- Separate from any Library PAC
- Based on their instructions, POPL made a donation to the *East Baton Rouge Parish Library Political Action Committee*, but did not itself run the campaign



Advice and Input

- ALTAFF (Association for Library Trustees, Advocates, Friends and Foundations)
- LANO and other local non-profits such as BRAF
- Non-profit experts such as *The Metropolitan Group*, *Library Strategies Consulting Group*, and other clearinghouses of information for Friends' groups
- ALA (American Library Association)
- PLA (Public Library Association)
- LLA (Louisiana Library Association)
- State Library of Louisiana
- ULC (Urban Library Council)
- WebJunction
- and other library publications, websites, listservs, webinars, etc.



On behalf of all those who have benefitted from POPL's constant yet quiet assistance to the Library over the past 27 years...



Thanks For All You Do!