

Thompson Building Energy Solutions, LLC

3071 Teddy Drive, Baton Rouge, LA 70809

Phone 225-490-9583 Fax 225-293-4171

Commissioning Site Visit

Date: February 8, 2013

Project: Independence Park Main Library Baton Rouge, Louisiana

Date Visited: February 6, 2013

OBSERVATIONS

1. HVAC piping and ductwork including duct insulation, Plumbing and Sprinkler piping installation is continuing on 1st, 2nd, and 3rd floors.
2. Commissioning agent is to be notified to witness tests on all hydronic piping systems. Only two hydronic tests have been witnessed as of today's date. One set (CWS & CWR ?) on the 1st floor and one set (HWS & HWR) on the 2nd floor. All condenser water, chilled water and heating hot water piping is to be tested.
3. Duct pressure testing has been completed on the main supply ducts from AHU No. 1 thru 10. Each of the ducts tested passed. Duct pressure testing for AHU No. 11 and No. 12 remain.
4. Remove standing water from air unit drain pan(s).
5. Pumps motors and not protected.
6. Protect pipe open ends of HVAC, Plumbing, and Sprinkler piping.
7. Various stored materials are not being protected.
8. Cups, cans, plastic bottles and miscellaneous debris stuck in wall stud spaces at various locations.
9. No smoking in building.
10. Refer to pictures attached.

Picture 1



Protect Air Unit Coils Openings. (Typical)

Thompson Building Energy Solutions, LLC

3071 Teddy Drive, Baton Rouge, LA 70809

Phone 225-490-9583 Fax 225-293-4171

Picture 2



Clean AHU's and protect cabinets. (Typical)

Picture 3



Clean AHU's and protect cabinets. (Typical)

Picture 4



Protect unit openings. (Typical)

Thompson Building Energy Solutions, LLC

3071 Teddy Drive, Baton Rouge, LA 70809

Phone 225-490-9583 Fax 225-293-4171

Picture 5



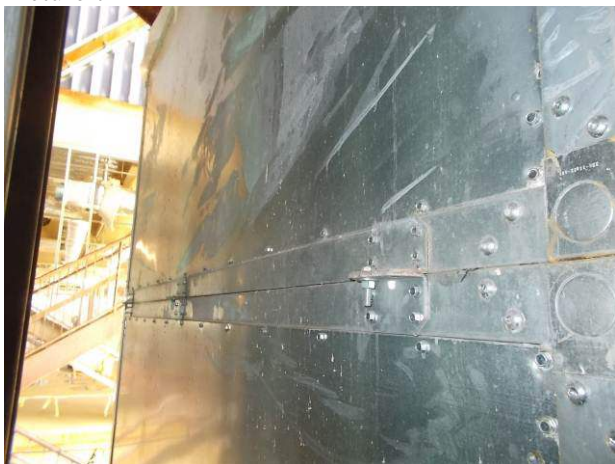
Provide temporary pipe caps as req'd. (Behind ERV)

Picture 6



Protect AHU openings.

Picture 7



protected.

Clean AHU cabinet. Typical all units exposed and not

Thompson Building Energy Solutions, LLC

3071 Teddy Drive, Baton Rouge, LA 70809

Phone 225-490-9583 Fax 225-293-4171

Picture 8



Protect open pipe ends

Picture 9



Protect open ends of pipe.

Picture 10



Cigarette Butt on floor. No Smoking in building.

Thompson Building Energy Solutions, LLC

3071 Teddy Drive, Baton Rouge, LA 70809

Phone 225-490-9583 Fax 225-293-4171

Picture 11



Insulation compressed by piping. No Pipe saddle.

Picture 12



Pipe saddles missing at hanger supports.

Picture 13



Protect stored materials.

Thompson Building Energy Solutions, LLC

3071 Teddy Drive, Baton Rouge, LA 70809

Phone 225-490-9583 Fax 225-293-4171

Picture 14



Protect stored materials.

Picture 15



Protect pump motors from dust & dirt.

Picture 16



Verify proper access to VAV Box

Thompson Building Energy Solutions, LLC

3071 Teddy Drive, Baton Rouge, LA 70809

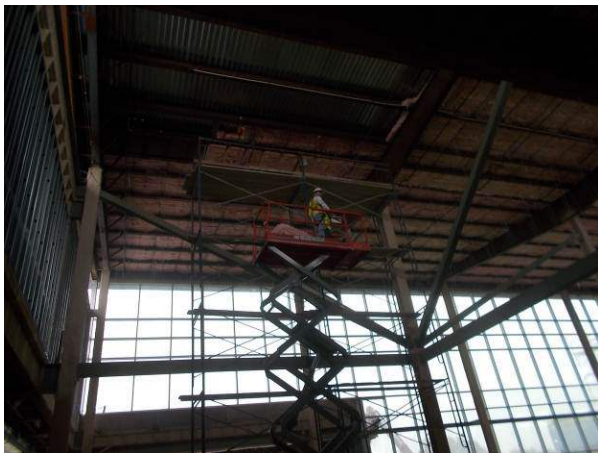
Phone 225-490-9583 Fax 225-293-4171

Picture 17



Verify proper access to VAV Box.

Picture 18



Workers smoking inside of building.

Picture 19



Clean up water from floor in building.

Thompson Building Energy Solutions, LLC

3071 Teddy Drive, Baton Rouge, LA 70809

Phone 225-490-9583 Fax 225-293-4171

Picture 20



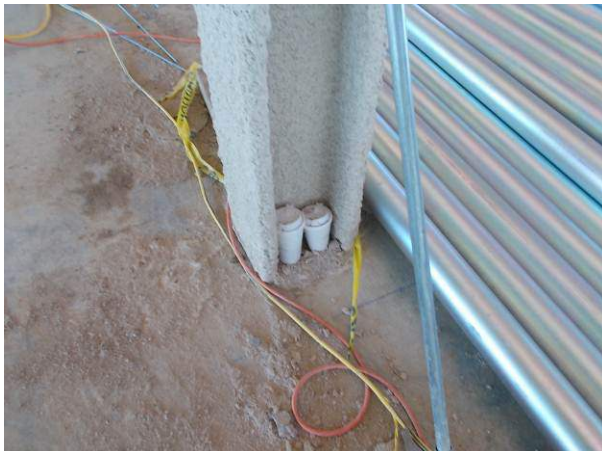
Clean up water from floor in building.

Picture 21



Duct insulation compressed by piping.

Picture 22



sheet rock.

Clean debris from walls & framing prior to installing

Thompson Building Energy Solutions, LLC

3071 Teddy Drive, Baton Rouge, LA 70809

Phone 225-490-9583 Fax 225-293-4171

Picture 23



Protect fan coil unit.

Picture 24



Protect stored materials. Clean out pipe before installation. Also see next picture.

Picture 25



Thompson Building Energy Solutions, LLC

3071 Teddy Drive, Baton Rouge, LA 70809

Phone 225-490-9583 Fax 225-293-4171

Picture 26



Protect open ends of piping.

Picture 27



Protect open ends of piping.

Picture 28



Replace broken temporary pipe cap.

Thompson Building Energy Solutions, LLC

3071 Teddy Drive, Baton Rouge, LA 70809

Phone 225-490-9583 Fax 225-293-4171

Picture 29



Replace broken temporary pipe cap.

Picture 30



Remove standing water from AHU drain pans.

Observations made by Michael Perkins – Thompson Building Energy Solutions, LLC