

---

## WHLC Architecture - Schwartz/Silver Architects

---

A Joint Venture

### CONSTRUCTION REPORT

---

Project: River Center Branch Library

Project No.: 11-025

Report No.: 008

Site Visit Date/Time: 03-30-2017

Location: Project Site; site visit and walk

Attendees: T. Mathis, J. Frey, R. Roussel, T. Colomb, M. Caillouet.

Weather/Temp:

Work in Progress/Observations:

- Structural Steel work continues on site.
- Deck is now getting placed on the joists.
- The lower slab at the service elevator along with the ramp here has been poured. The concrete finish looks good in this area. Light Broom finish on the ramp section.
- The contractor has re-submitted the cold formed framing shop drawings for review by the structural engineer. These were returned with no issues from the engineer.
- The discussion continues regarding the HVAC Supply and Return lines with the adjacent project.
- A coordination meeting was conducted Wednesday of this week regarding how to proceed and in which project.
- More structural deck is being spread out and installed at the second and third floors.
- There are many more steel joists on site.

(see attached photos)

Items/Questions:

Prepared by: WHLC Architecture, LLC.



IMG\_2138



IMG\_2140



IMG\_2141



IMG\_2142





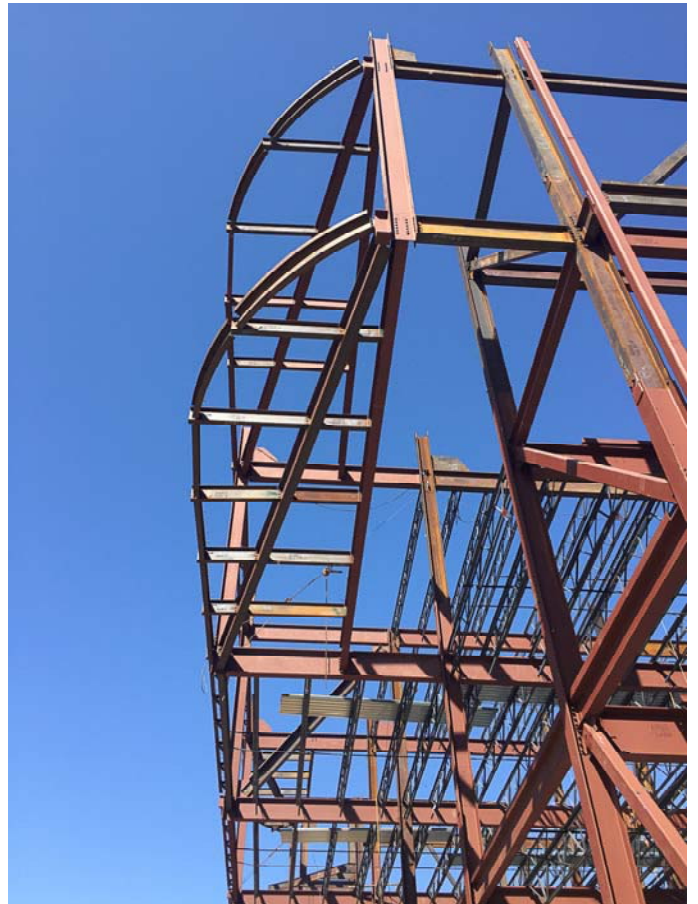
IMG\_2152



IMG\_2156



IMG\_2158



IMG\_2165



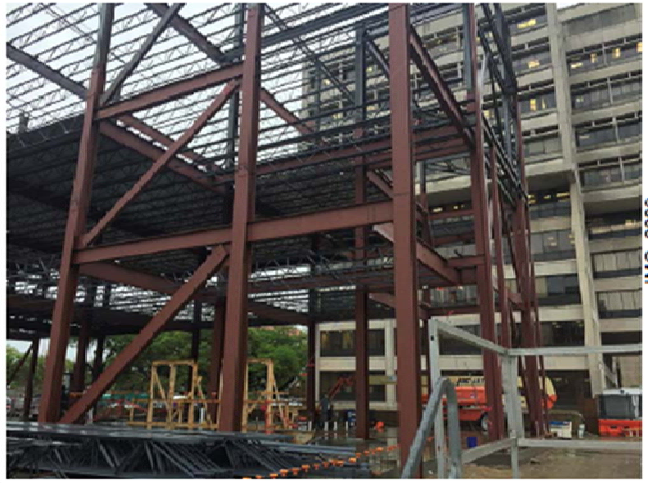
IMG\_2207



IMG\_2210



IMG\_2205



IMG\_2209