
WHLC Architecture - Schwartz/Silver Architects

A Joint Venture

CONSTRUCTION REPORT

Project: River Center Branch Library

Project No.: 11-025

Report No.: 033

Site Visit Date/Time: 04-12-2018

Location: Project Site; site visit and walk

Attendees: R. Roussel, T. Colomb, T. Mathis, M. Caillouet

Weather/Temp: Sunny day, clear skies, lows in the 50s highs in the 60s.

Work in Progress/Observations:

- The project is moving along with work now happening on the balcony.
- Balcony pedestals and pavers are now being installed.
- The Balcony landscaping area is also being installed.
- The drainage board, root barrier and matting is all being installed with the planting media and material to follow tomorrow.
- The contractor has spread the loading out of the pavers all along the 4th floor so there are no concentrated construction loads.
- ACM panels are going up the column enclosures along the western elevation.
- The precast concrete tread with sandblasted nosing was ready for review in the trailer. The decision was to move the blasted area closer to the nosing by 1".
- There was plenty of cooper lighting fixtures stored on the ground floor of the library as well as the second floor.
- Ceiling grid was going in on the 3rd floor.
- Ceiling curtain pockets were being installed.
- Generator yard has the vapor barrier mastic installed as well as metal furring for the metal panel cladding.

(see attached photos)

Items/Questions:

Prepared by: WHLC Architecture, LLC.



IMG_0811



IMG_0813



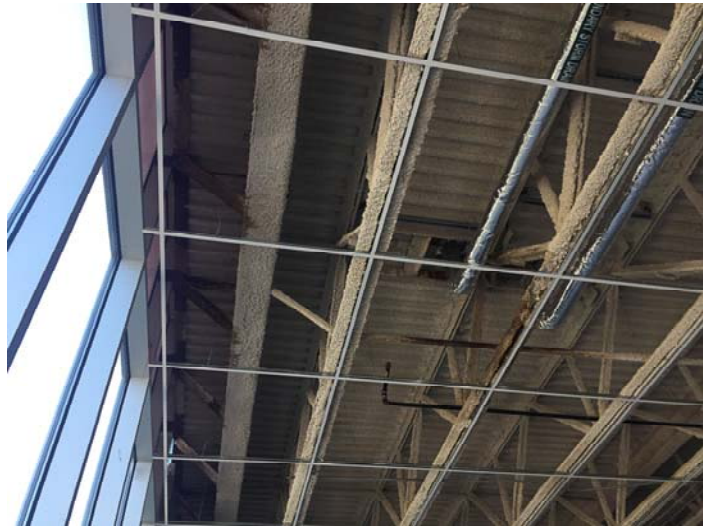
IMG_0816



IMG_0817



IMG_0819



IMG_0825



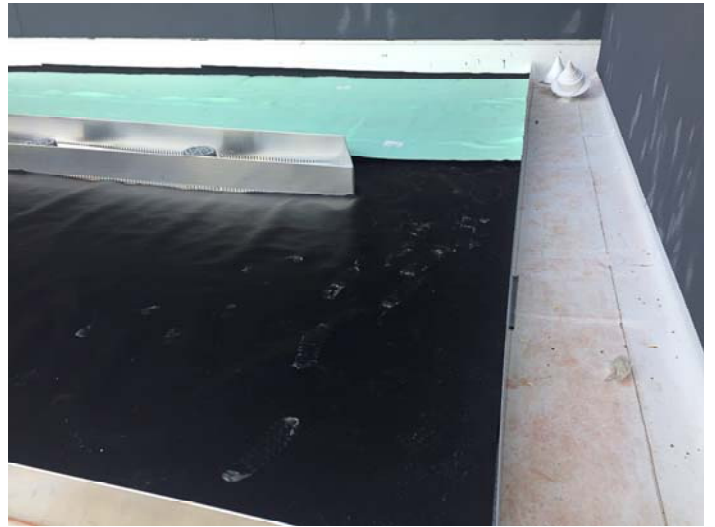
IMG_0827



IMG_0828



IMG_0829



IMG_0831



IMG_0832



IMG_0834



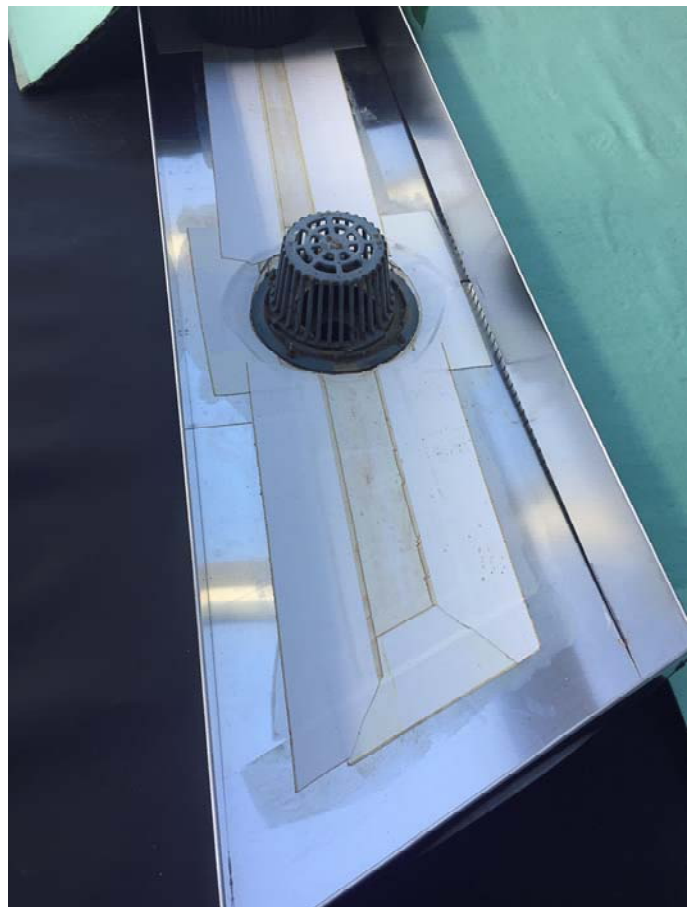
IMG_0835



IMG_0836



IMG_0837



IMG_0842



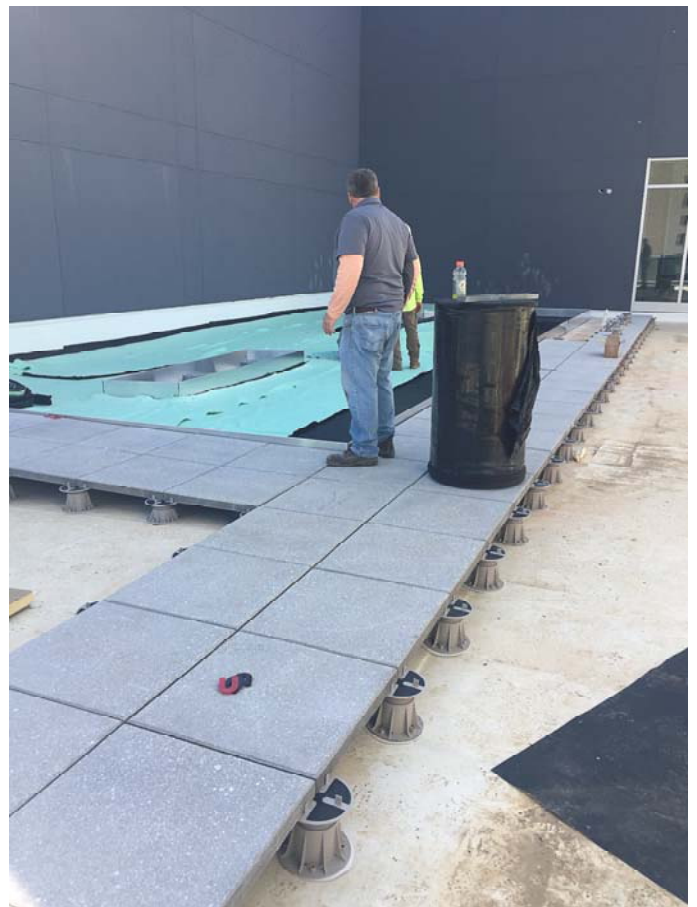
IMG_0844



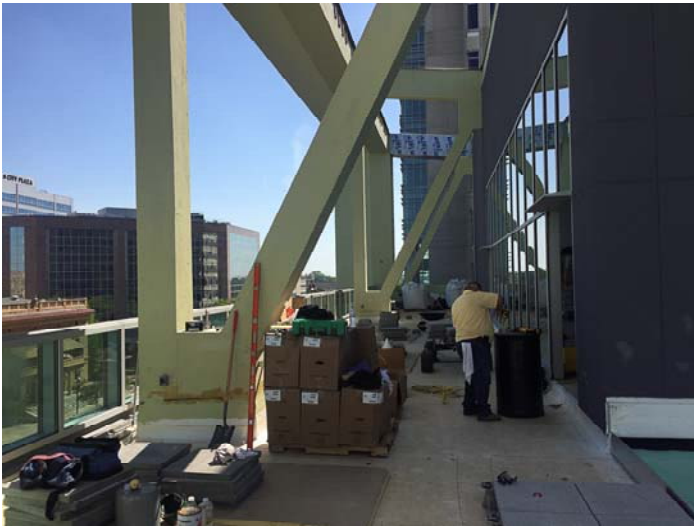
IMG_0847



IMG_0848



IMG_0854



IMG_0855



IMG_0856



IMG_0857



IMG_0859



IMG_0863



IMG_0865



IMG_0872