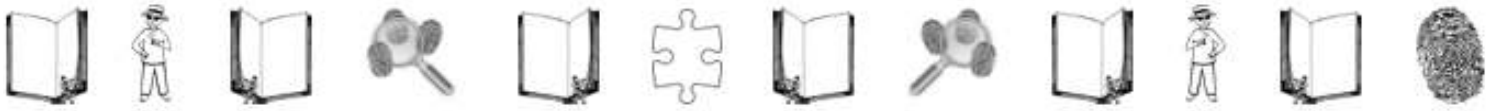


EXTRA CRAFTY:

Classic Detective Hat



You will find a template for a paper detective hat attached. After you cut out the template, you can choose to trace it on a different kind of paper or you can color the template and use it for your hat!

Begin construction your hat by gluing the two sets of mountain-like pieces into a circle, then securing the tops of all six mountains together. This will be the top of your hat.

Next, glue the front and back visors onto the hat.

Last glue the bottom of the ear flaps to the bottom sides of the hat. When they are dry, fold them up and over the hat and secure both earflaps together with a small piece of string.

Wear your hat while searching for clues just like Sherlock Holmes!



glue here

earflap (cut 2)

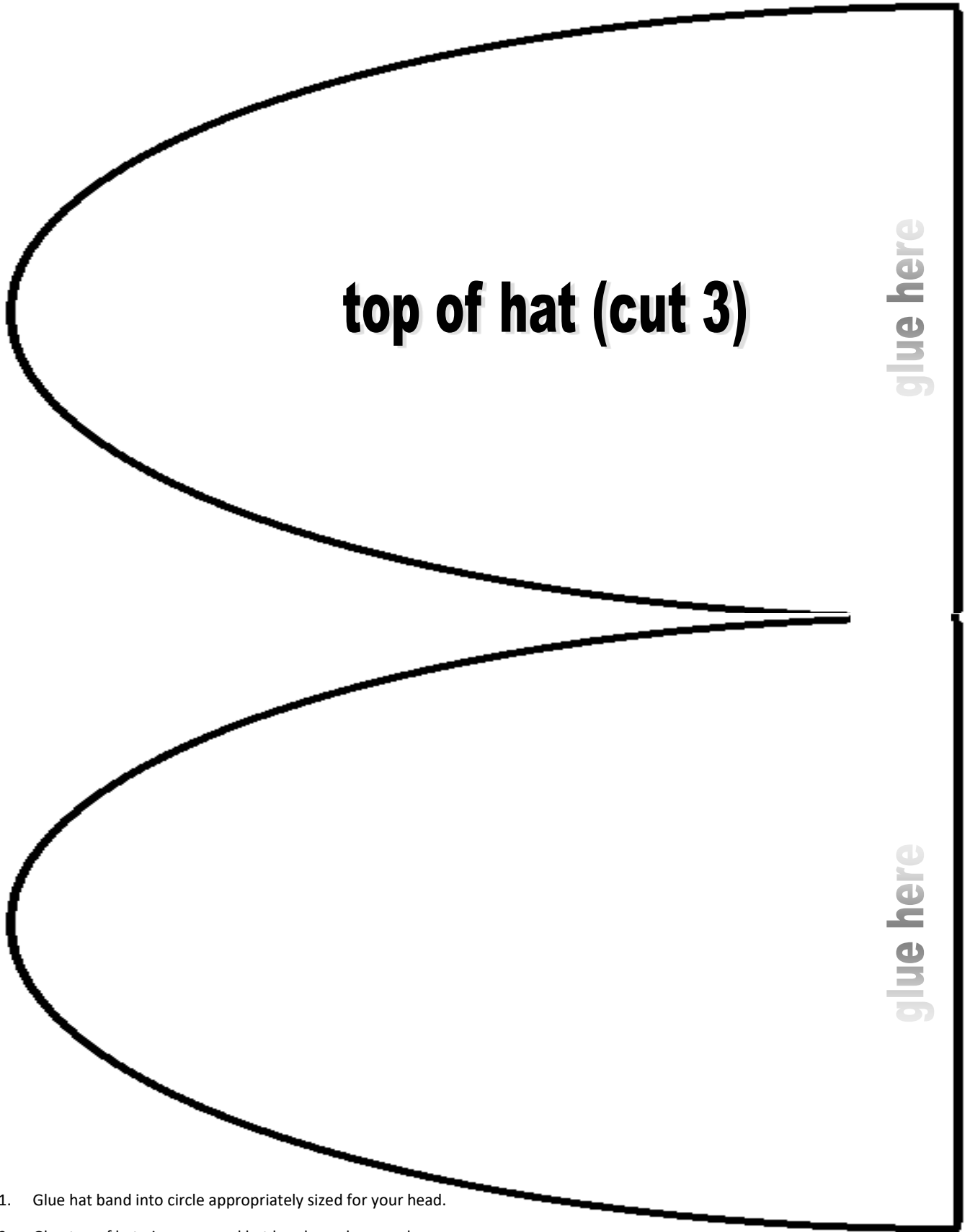
hat brim (cut 2)

glue here

To attach the brim, cut the tabs apart and fold upward.

Glue on the top side of the tab and press into the inside of the hat band.

hatband (cut 2)



top of hat (cut 3)

glue here

glue here

1. Glue hat band into circle appropriately sized for your head.
2. Glue top of hat pieces around hat band evenly spaced.
3. Pin top of hat together into a dome with glue or a brad.
4. Glue hat brim to front and back of hat.
5. Glue earflaps to each side of the hat and flip over the top. Connect earflaps together with a string.
6. Enjoy your hat!