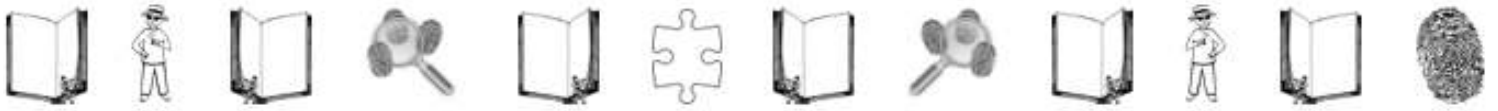


CRAFTY CHALLENGE

Play Magnifying Glass



Create this magnifying glass to help you investigate the world.

MATERIALS NEEDED:

You will need the printed template, scissors, tape, glue, crayons or other decorating materials, a popsicle/craft stick, and thin, clear plastic (such as a food storage bag or page protector).

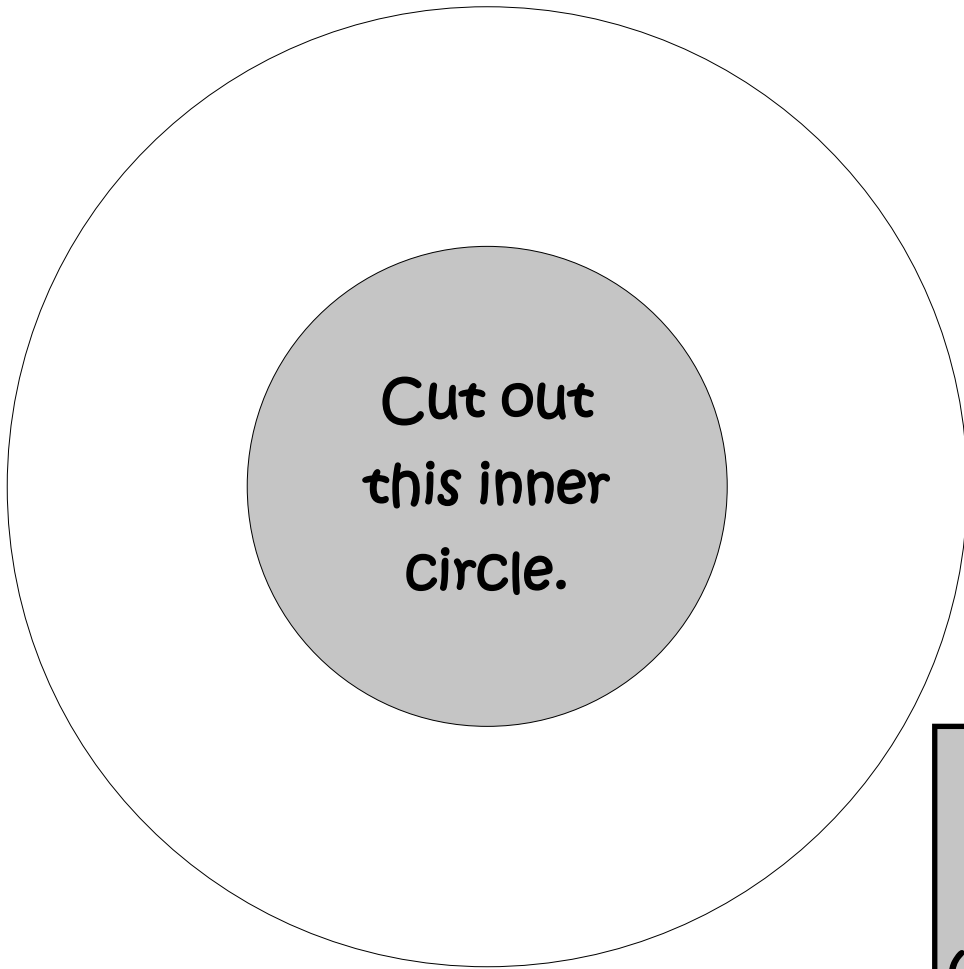
INSTRUCTIONS:

- Cut out the large circles on the template and then cut out the gray inner circles. Be sure not to cut through the outside circle! You should now have what looks like two donuts or rings.
- Cut out a three inch square of thin, clear plastic.
- Decorate the two rings. You only need to decorate one side of each ring.
- Tape the square of plastic to the undecorated side of one of the rings, covering the open circle in the middle.
- Tape the craft stick to the undecorated side of the same ring. The craft stick should be on the ring below the plastic covered circle.
- Glue the other ring on top, undecorated side down.

Note: It's best if you print the template on cardstock or trace it onto thin cardboard (try using a cereal box).

Now you are ready to be a detective!





Cut out a piece of thin, clear plastic (perhaps from a food storage bag) this size and shape (3 inches by 3 inches).

